

# Parhit Samaj Seva Sanstha: Empowering Sahariya Tribal Villages in Shivpuri District, Madhya Pradesh (2022-23)

In the heart of India, the Shayari tribal villages in Shivpuri district, Madhya Pradesh, face numerous challenges in their daily lives. Parhit Samaj Seva Sanstha, a dedicated organization, has been working tirelessly to address these issues and promote sustainable development in these villages. During the year 2022-23, our focus has been on:

- Ensuring irrigation and drinking water in villages
- Promoting natural farming practices
- Improving child health and addressing child labor
- Enhancing nutrition and upholding child rights
- Alleviating poverty and promoting sustainable livelihoods

Our primary objective is to empower the Shayari tribe and improve their overall well-being. We believe in a holistic approach, addressing the social, economic, and environmental aspects of sustainable development. Our team of dedicated workers is committed to making a positive impact in the lives of these tribal communities.

Through our initiatives, we aim to create a lasting difference in the Shayari tribal villages, ensuring a better future for generations to come. Join us in our

mission to empower these communities and promote sustainable development in Shivpuri district."



# **Content**

(1) Welcome.

(2) Introduction.

(3) Vision and Mission.

(4) Our Presence.

(5) Parhit by the number.

(6) Our Achievement.

(7) Present Project.

(8) Parhit registration details and Board of directors.

(9) Statements of financial position

(10) Partners and Peers

# Welcome

Dear friends,

With the turn of this year, it gives me immense pleasure to present the Parhit Annual Report for 2022-23, which provides a glimpse of what we did and achieved this year through our synergized effort.

The year 2022-23 has been the year of achievements for Parhit. Collaborative approaches once again paid the desired result. During the year we effectively implemented projects, reaching out to over 6000. families and youth directly through various services and activities.

It is equally satisfying to see Parhit's increasing ability to handle multiple projects through the skilled and dedicated team it has been able to build. To enhance their field knowledge and skills of working. they are continuously been groomed through training programs and workshops. It is encouraging to note that this year we implemented some new projects in existing areas, by which we were able to extend our services to new group of communities.

It also helped us to experiment with some different approaches, and in the process, learn something new, enhancing the ever-growing skill and knowledge base of Parhit. With the different type of projects ' we got new experience of work with CSO's, Organic farming, advocacy on water clean energy and climate change, Through our initiatives, we aim to create a lasting difference in the Shayari tribal villages, ensuring a better future for generations to come. Join us in our mission to empower these communities and promote sustainable development.

Admittedly, what we achieved this year could not have been possible without the constant support of our dedicated partners and donors. With the end of this successful cycle, please join me in appreciating and recognizing the contribution made by our frontline workers, donors, government functionaries and board members. We are grateful to have such a dynamic team, generous donors listed at the end of the report, and our collaborating partners. We heartedly laud their valuable support. With all the best wishes,



**Raghvendra Singh**

**Secretary, Parhit Samaj Seva Sanstha**

# Introduction

Parhit was founded in the year 1996 to mainstream socially, economically and educationally backward Dalits and weaker sections of people. It organizes the communities and builds their capacities to link them with the process of social change and holistic development so they develop self-esteem, self-confidence, self-decision and self-reliance and become capable of meeting their basic needs.

Immediately after registration Parhit started strengthening panchayats. Gradually other issues like community health, natural resource management, and water and sanitation were added to significantly decrease poverty, which is rampant in the operational area.

In the recent years the organization is gradually and progressively moving towards what is called rights based mode. It is working on right to food and right to work, particularly for Sharia tribes found in the area. It is involved several campaigns, social audit and microplanning for addressing concerns of the people.

Formation and capacity building of community based organizations is integral part of Parhit's work. It is through these CBOs that information regarding issues affecting people's lives is disseminated and coordination is made with the administration to address these issues. Working through CBOs gives stability to the interventions.

Parhit works with the deprived, destitute, disabled, widows, women and children.

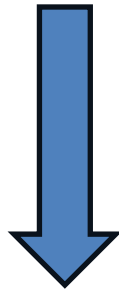
## **Vision**

To establish a society where men and women are treated equally such that they rise above the boundaries of sex, caste, class, and religion and begin a united move toward the path of humanity.

## **Mission**

. To mobilize people for their development, provide information facilities and build capacities so that they move on the path of development on continuous basis.

## **Way of Action**



Strengthening of community through Training meeting

Benefited community through govt. flagship scheme

Advocacy

Create Sustainable livelihood through innovation

***Our Presence.***

# SHIVPURI DISTRICT



## LEGEND

- National Highway
- State Highway
- Major Road
- State Boundary
- District Boundary
- Railway
- River/Lake
- District Headquarter
- Major City/Town
- Other Town/Village

Map not to Scale

Copyright © 2018 www.mapsofindia.com

## ***Parhit by the number.***

**5827**

Benefitted by govt. flagship scheme, established village level group among communities Parhit reached to through its various services in the year 2019-20.

**693**

Child Protection/Care- Medical help, Shelter, reached their home,24 hours provide support through 1098 helpline.

**18099**

Empowered girl, boy and community child marriage, child education and girl/boy discrimination.

**17375**

Direct reach to community during implementation of program.



# ***Present Project.***

## **➤ Project title: Sustainable Development for Children in the Mining Affected States in India**

Sustainable Development for Children in Mining-Affected Areas of Shivpuri District, Madhya Pradesh

The Shivpuri district of Madhya Pradesh, a region rich in mineral resources, is home to numerous mining activities that have significant environmental and social implications. While mining contributes to the local economy, it also poses severe risks to the health, education, and well-being of children in the surrounding communities. This project aims to address the critical needs of children in these mining-affected areas, focusing on education and health as key pillars of sustainable development.

Despite India's progress in child development, children in mining-affected areas face unique challenges, including:

- Limited access to quality education
- Increased health risks due to environmental pollution
- Higher vulnerability to child labor and exploitation

To address these issues, our project will work towards:

- Improving access to quality education for children in mining-affected areas
- Enhancing health and nutrition services for children
- Creating awareness on environmental and health risks associated with mining
- Empowering communities to advocate for their rights and demand better services

Through a collaborative approach with local communities, government

agencies, and experts, we will develop and implement context-specific solutions to ensure the sustainable development of children in Shivpuri district. By prioritizing education and health, we aim to create a brighter future for these children, helping them reach their full potential and become agents of positive change in their communities."





## ➤ **Jivdaya Foundation Project: Empowering Rural India through Upliftment and Poverty Elimination Initiatives in Shivpuri District, Madhya Pradesh**

In the heart of India, Shivpuri district in Madhya Pradesh is home to vibrant rural communities that face numerous challenges in their daily lives. The Jivdaya Foundation is dedicated to making a positive impact in this region through a comprehensive project focused on two critical areas: Understanding India's Rural Upliftment Initiatives and Understanding

## Hunger and Rural Poverty Elimination Initiatives.

As part of this project, we are committed to supporting the most vulnerable members of these communities - the children. Our initiative aims to provide essential nutrition and support to children in need, promoting their overall well-being and empowering them to reach their full potential.

Our project activities include:

- Distribution of Rasam Kits, comprising essential food items and nutrition supplements
- Provision of milk and biscuits to children, ensuring access to nutritious food
- Engagement with local communities, stakeholders, and policymakers to advocate for sustainable solutions

By addressing hunger and rural poverty, we aim to create a lasting impact in the lives of these children and their families, contributing to the overall development of Shivpuri district. Through this project, the Jivdaya Foundation is committed to fostering a brighter future for rural India  
Project area district – Shivpuri M.P.



## ➤ **Childline 1098**

Childline, started in 1998, is India's first 24-hour helpline service supported by the Ministry of Women & Child Development. The service is for children in need of aid and assistance and is provided through a toll-free 24-hour emergency phone service (1098). Apart from responding to emergency needs, it also helps in linking children in difficult circumstances with various services meant for their long-term care and rehabilitation. This one-point contact is meant to facilitate instant access to support, guidance, and active intervention.

Parhit implements this service in Shivpuri with two centres – City Childline (Shivpuri) and Railway Childline (Shivpuri). This year, Parhit, through these two Childline centres, handled 365 calls in the year of 2022 to 2023.

After this childline has taken by the government of INDIA.





### ***Parhit registration details and Board of directors.***

Parhit Samaj Seva Sanstha is a non-profit voluntary organization based in Madhya Pradesh. It was founded on 8 July 1996 to mainstream socially, economically and educationally backward and weaker sections of the society.

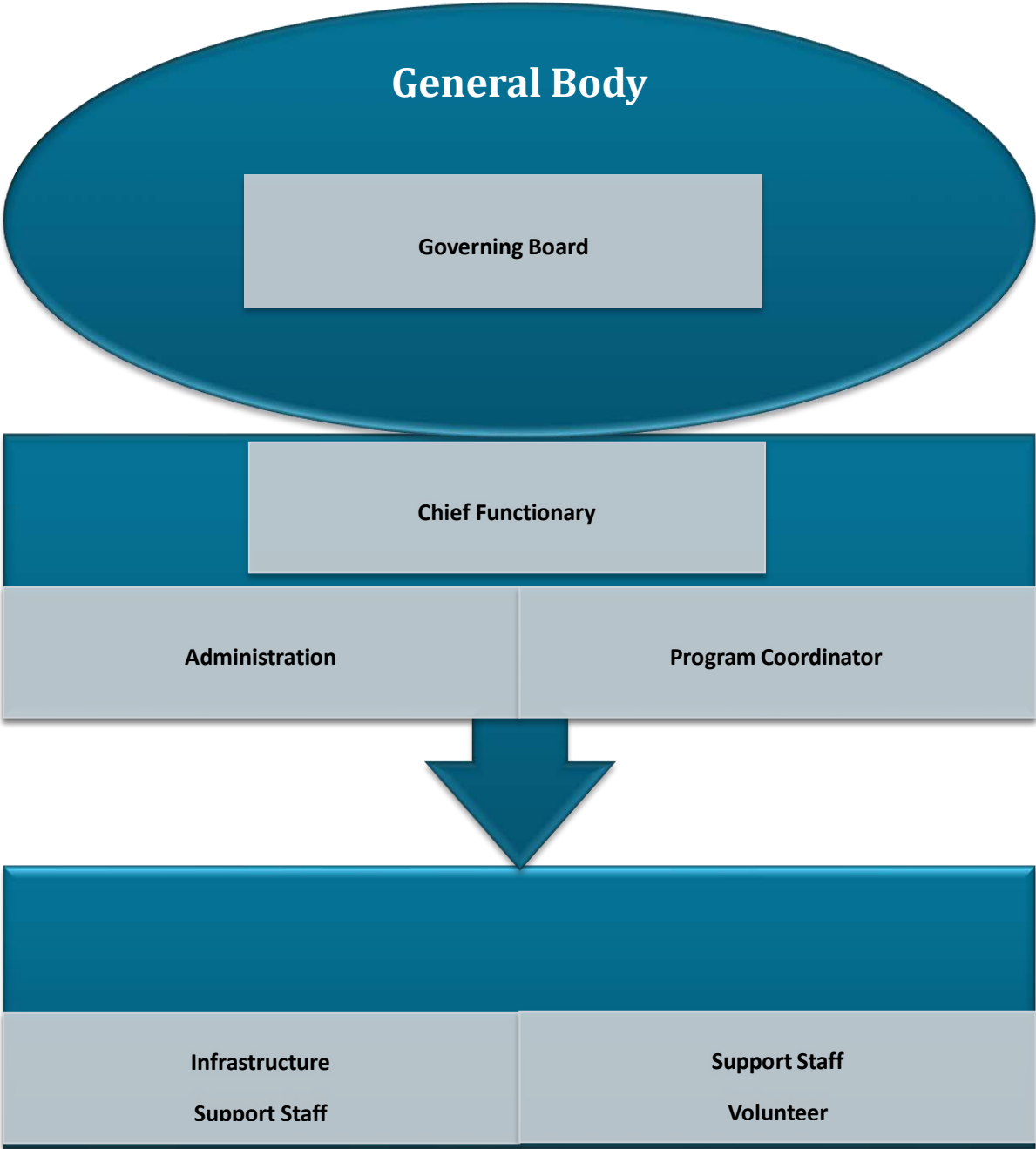
Immediately after registration, Parhit started strengthening panchayats. Gradually other issues like community health, mobilization, education, natural resource management, water and sanitation, women empowerment were added.

Parhit dream of a society where there are no barriers of caste and religion, and all men and women are treated equally and undertake interactive efforts to raise human solidarity based on the doctrines of comrades and believe in the unity of human being. Parhit name **(Participatory Research Action in Human Integration Tactics)** reflect the ideology guiding the organization.

## Board Members-

<b>S.N.</b>	<b>Name</b>	<b>Designation</b>
1.	Mrs. Richa Singh	President
2.	Mr. Aradhna Singh	Vice President
3.	Mr. Raghvendra Singh	Secretary
4.	Mrs. Sadhna Singh	Treasurer
5.	Rakesh Singh Tomar	Committee Member
6.	Neeta Singh	Committee Member
7.	Meenu Shukla	Committee Member
8.	Shalini Singh	Committee Member
9.	Vijay Singh	Committee Member

PARHIT ORGANIZATIONAL STRUCTURE





## ***Partners and Peers.***

Bharat Rural Livelihood Mission.

Azim premji foundation

Terre des hommes

Childline India Foundation.

UNICEF.

Indo Global Social Service Society.

National Health Mission.

Rotary International.

# 110, Barah Bigha Colony Contact Details- 9425116853

Koteswar Road Gwalior- 474012

Email- [parhitsanstha2000@yahoo.co.in](mailto:parhitsanstha2000@yahoo.co.in)

Web. [www.parhit.org.in](http://www.parhit.org.in).

